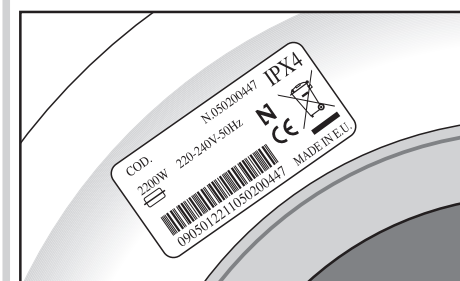


SERVICE APRÈS-VENTE ET RELATIONS CONSOMMATEURS

• **INTERVENTIONS**

Les éventuelles interventions sur votre appareil doivent être effectuées par un professionnel qualifié dépositaire de la marque. Lors de votre appel, mentionnez la référence complète de votre appareil (modèle, type, numéro de série). Ces renseignements figurent sur la plaque signalétique.



**PIÈCES D'ORIGINE**

Lors d'une intervention d'entretien, demandez l'utilisation exclusive de **pièces détachées certifiées d'origine**.



• **RELATIONS CONSOMMATEURS**

• **Pour en savoir plus sur tous les produits de la marque :** informations, conseils, les points de vente, les spécialistes après-vente.

• **Pour communiquer :** nous sommes à l'écoute de toutes vos remarques, suggestions, propositions auxquelles nous vous répondrons personnellement.

> **Vous pouvez nous écrire :**

**Service Consommateurs BRANDT**  
BP 9526  
95069 CERGY PONTOISE CEDEX

> **ou nous téléphoner au :**

**0892 02 88 01\***

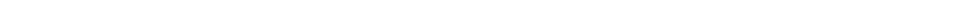
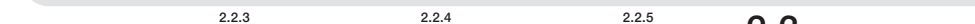
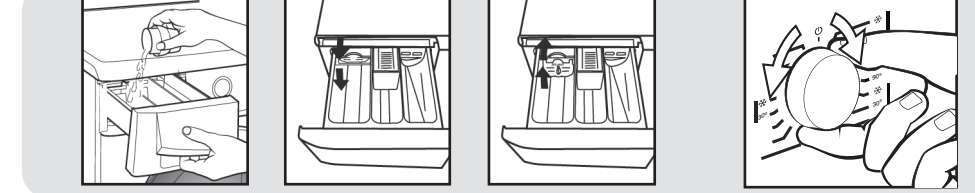
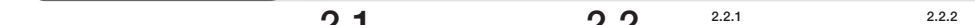
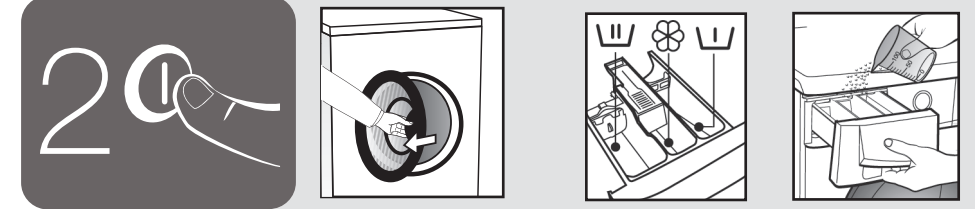
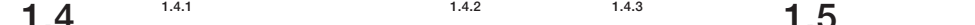
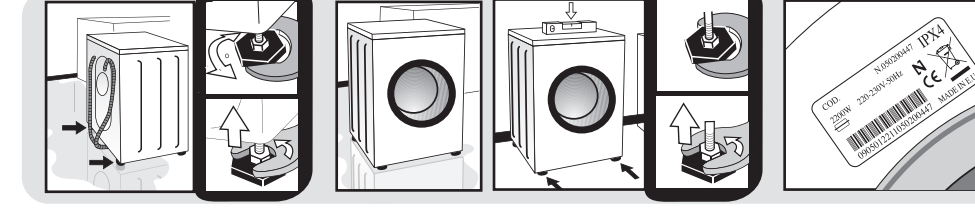
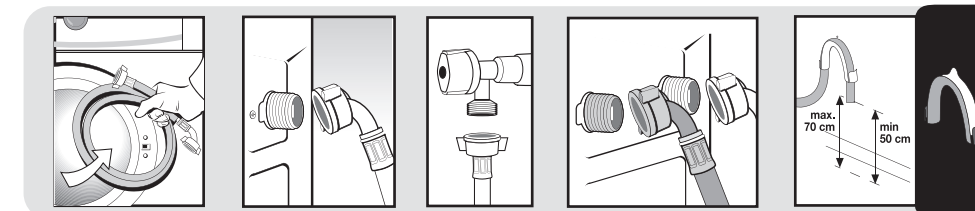
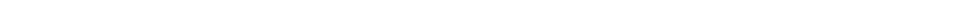
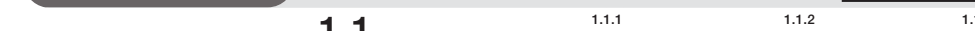
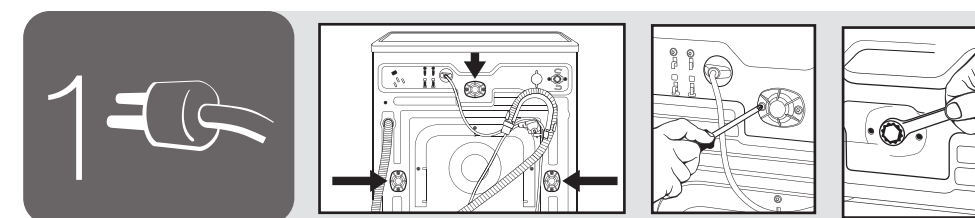
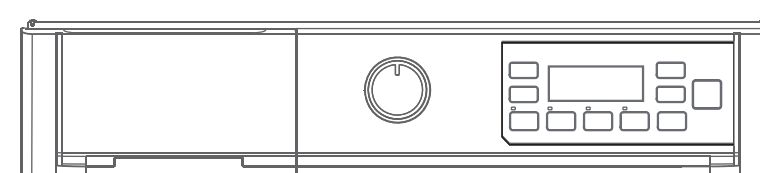
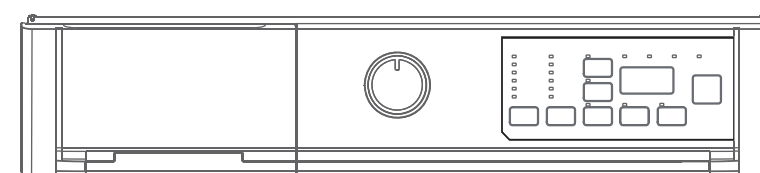
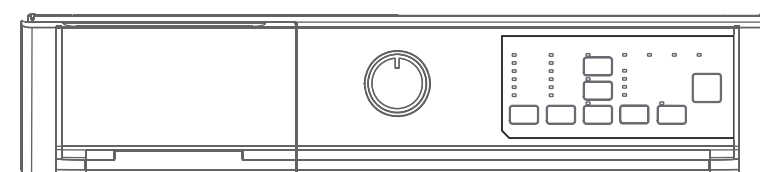
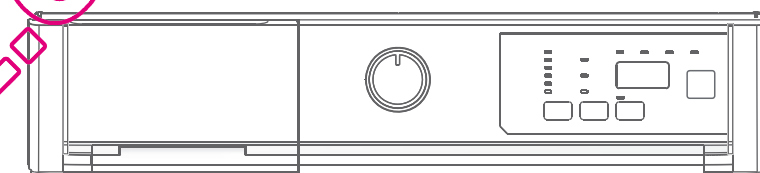
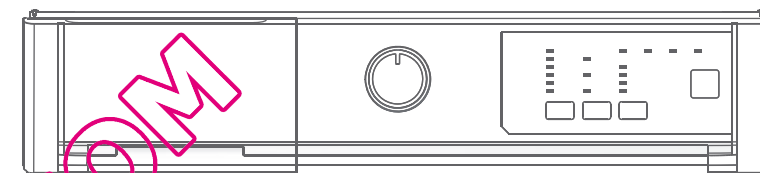
\*0,34€ TTC/min à partir d'un poste fixe

Tarif en vigueur au 1er avril 2004.

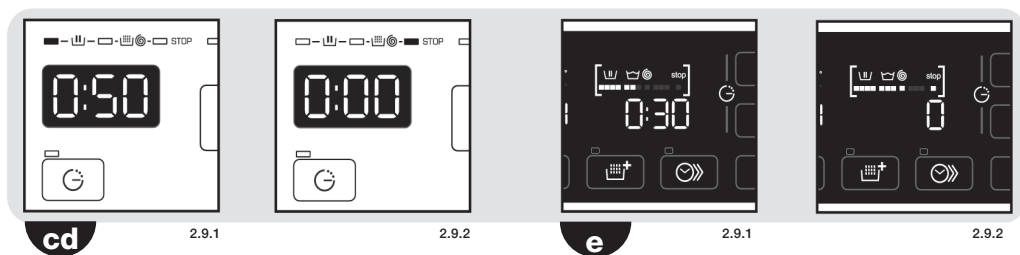
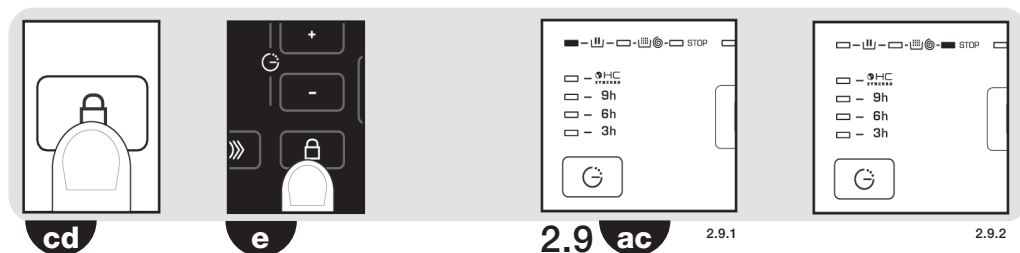
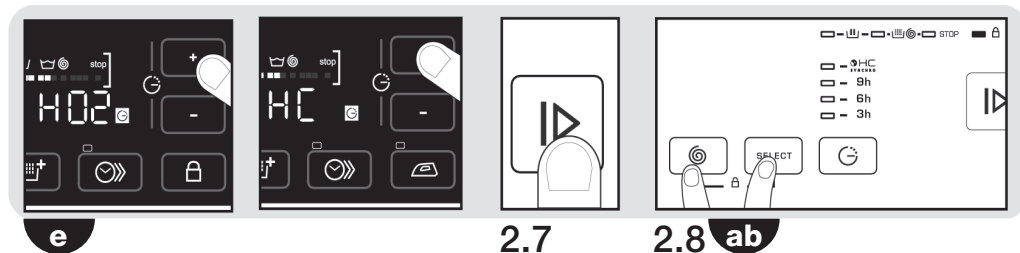
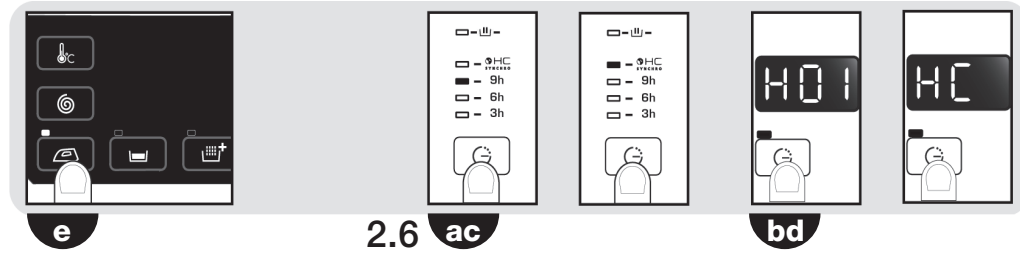
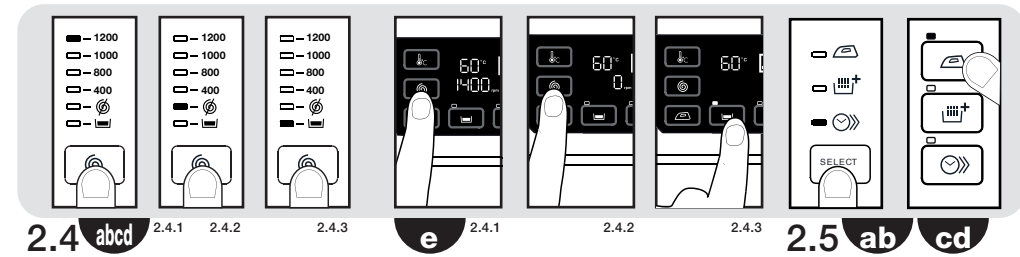
Service fourni par FagorBrandt SAS, locataire-gérant, Etablissement de Cergy,  
5/7 avenue des Béthunes, 95310 Saint Ouen l'Aumône SAS au capital social de 20.000.000 euros  
RCS Nanterre 440 303 196

**Brandt**

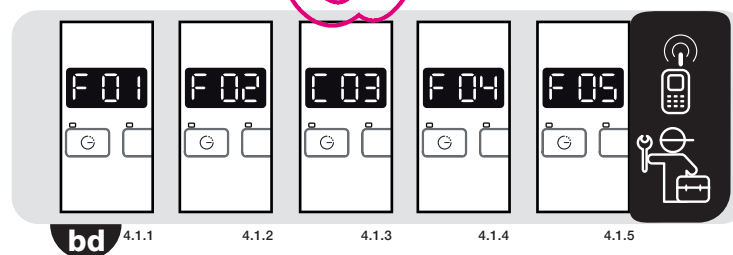
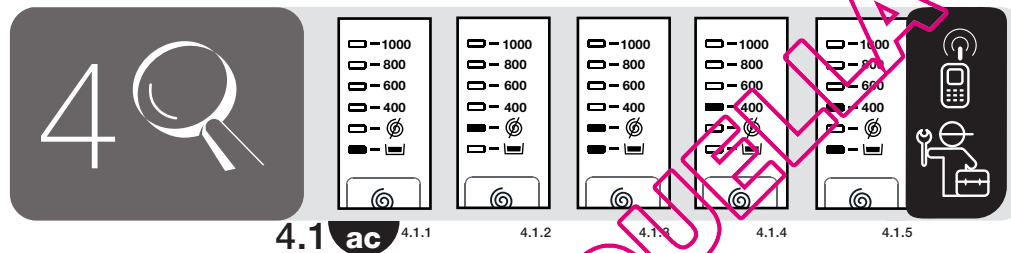
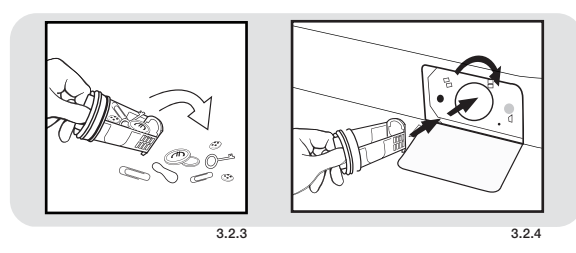
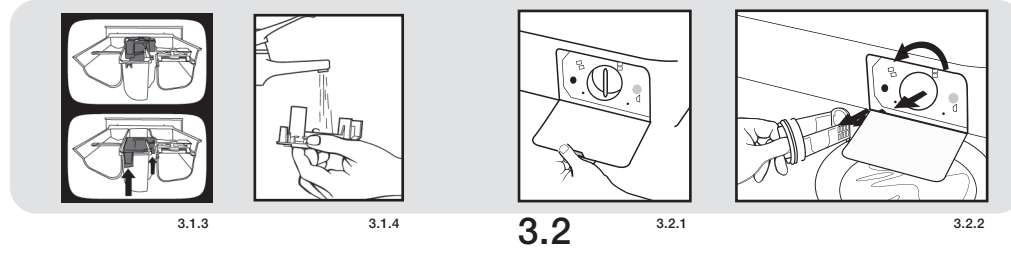
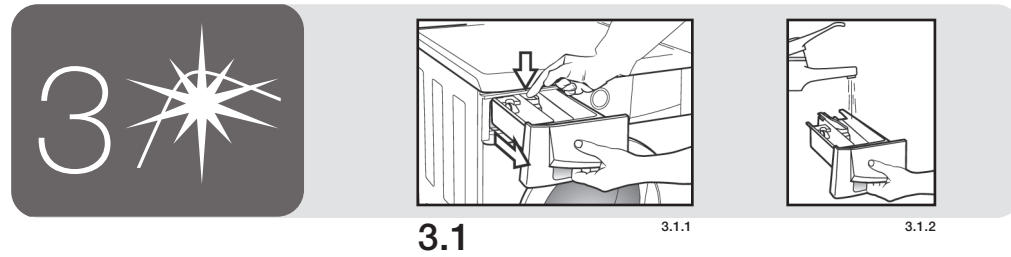
GUIDE D'INSTALLATION  
**Lave-Linge**



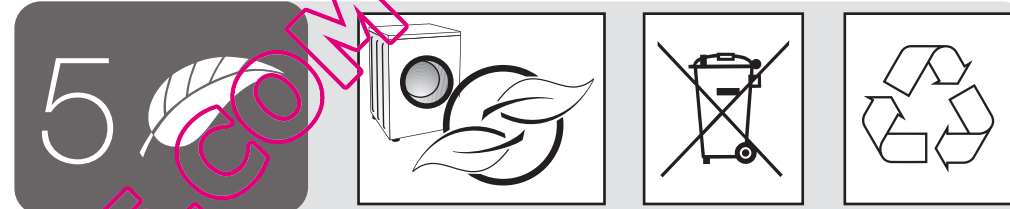
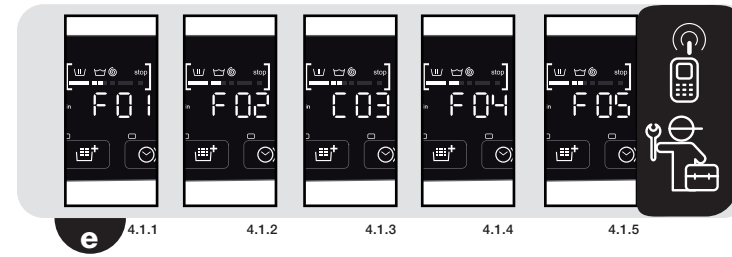
III



IV



V



QUELAVELINGE.COM